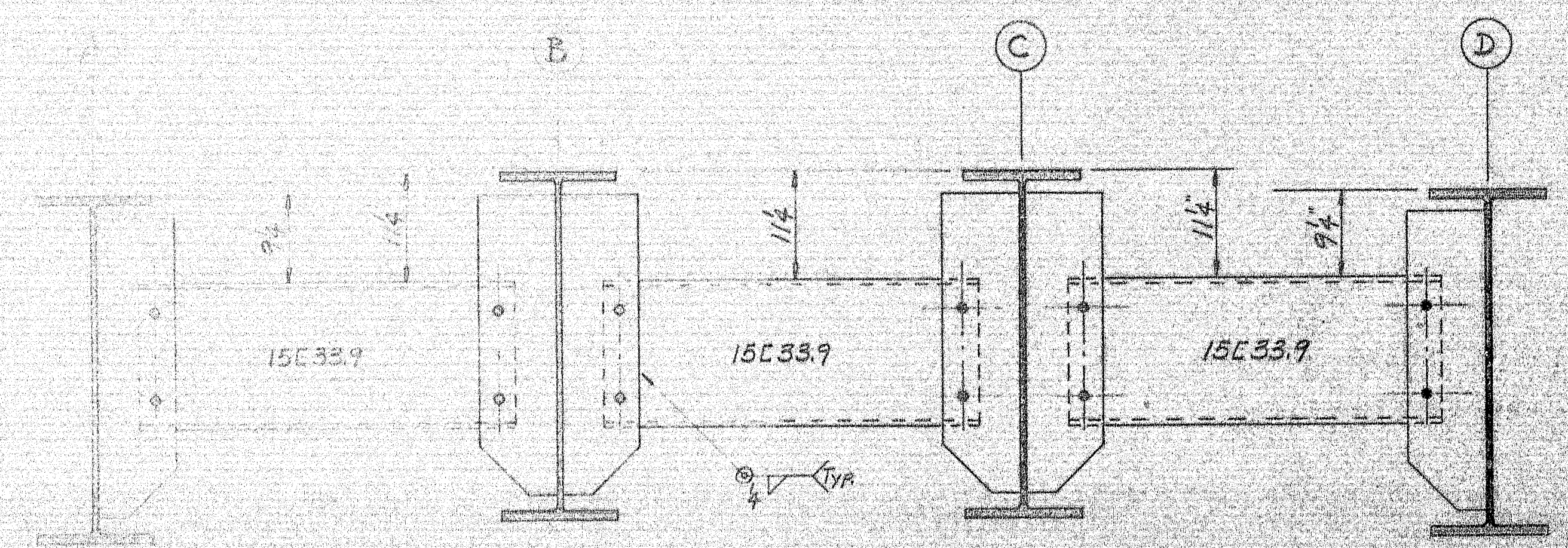
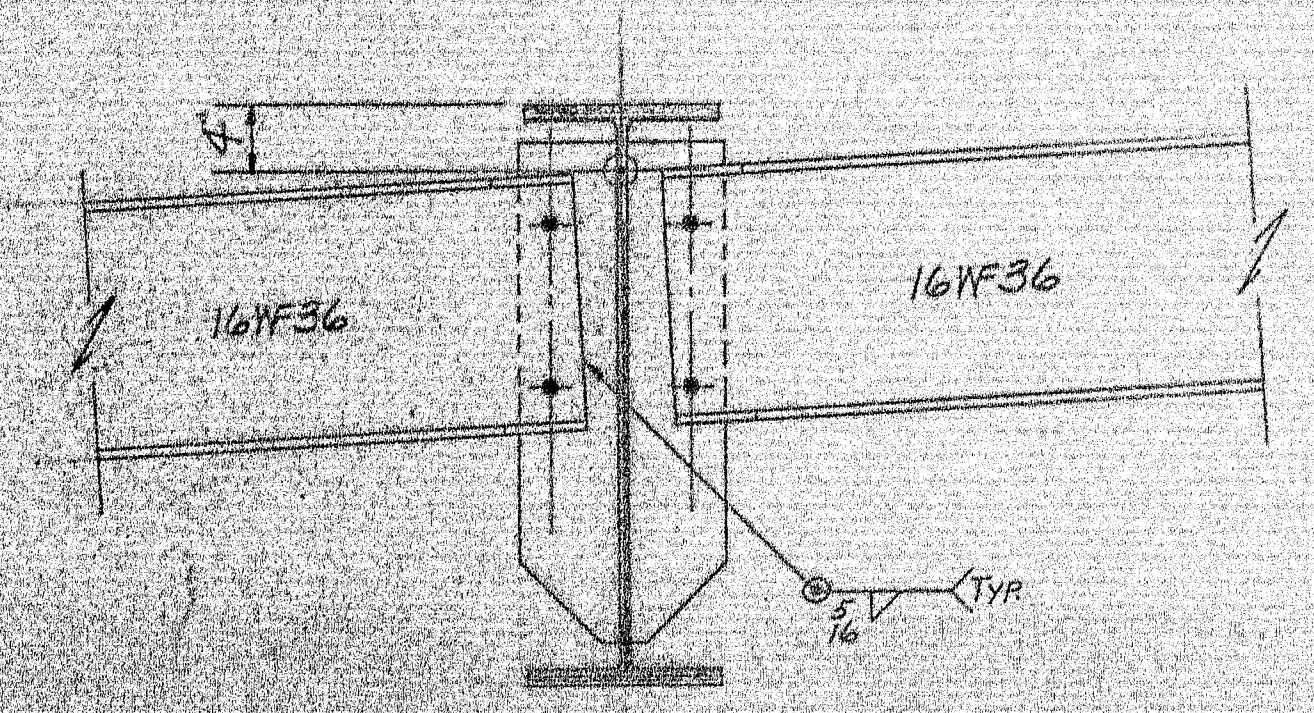


FRAMING PLAN



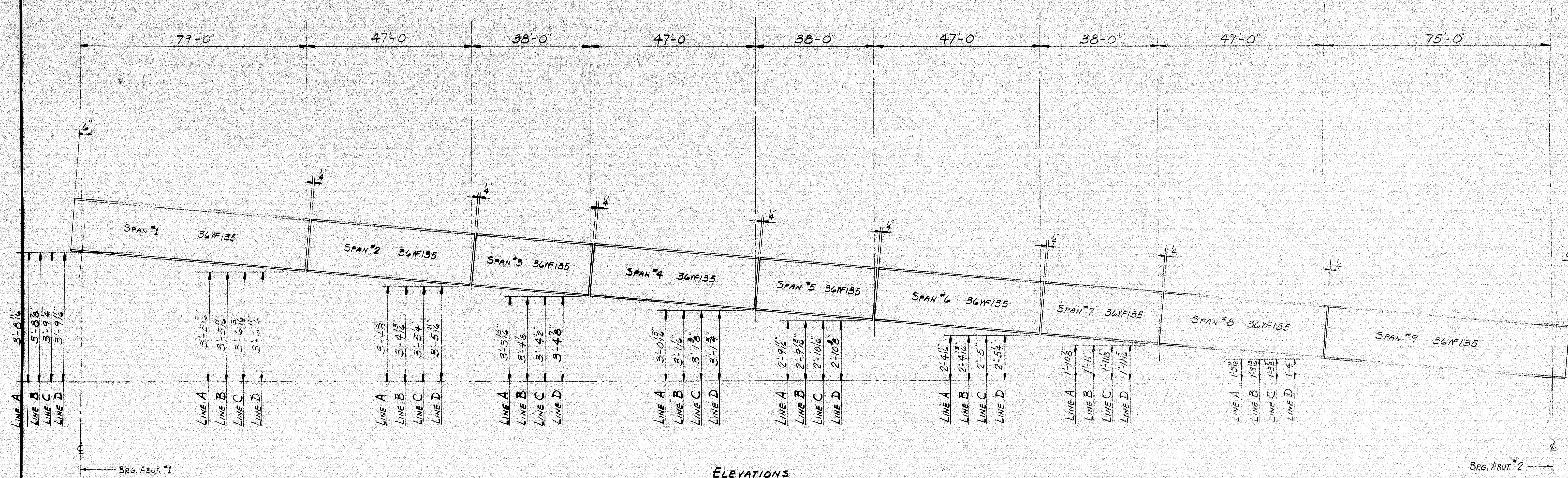
DIAPHRAGM CONNECTION



DIAPHRAGM CONNECTION

APP. 5-25-67		TRAIL No. I-95-9(42)270	
PRINT ISSUE		FRAMING PLAN	
		Bangor & Martin, Inc.	
		Bangor, Maine	
3 S.H.C. 5-29-67		BELVEDERE ROAD OVER I-95	
3 CUST. 5-29-67		ISLAND FALLS, MAINE	
2 SHOP 5-29-67		CUSTOMER NORMAN E. JACKSON	
3 F.A. 5-12-67		DESIGNER M.S.H.C.	
DRAWN 5-1-67 E.J.M.		ORDER VERBAL	
REVISION		DWG. B67-11A-E1	
REVISION			
REVISION			

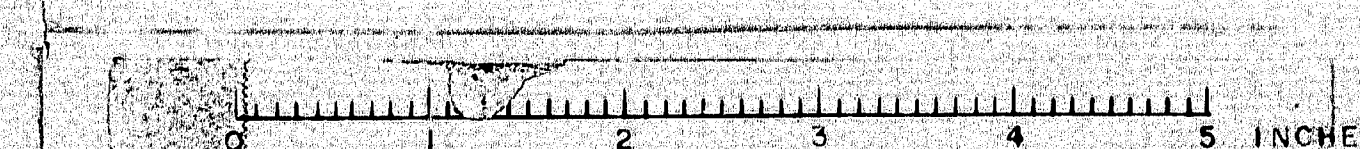
100-104

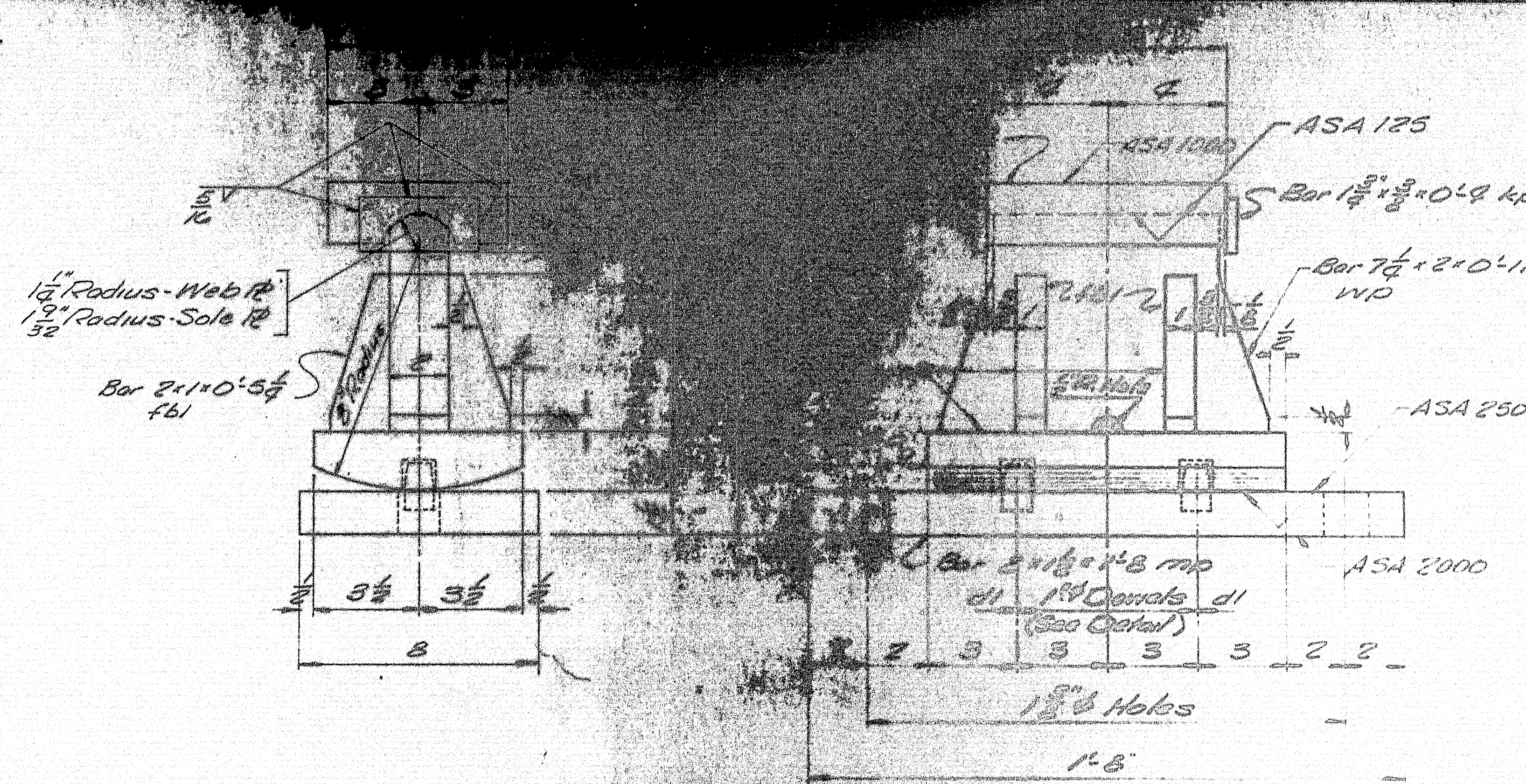


APP. 5-25-67

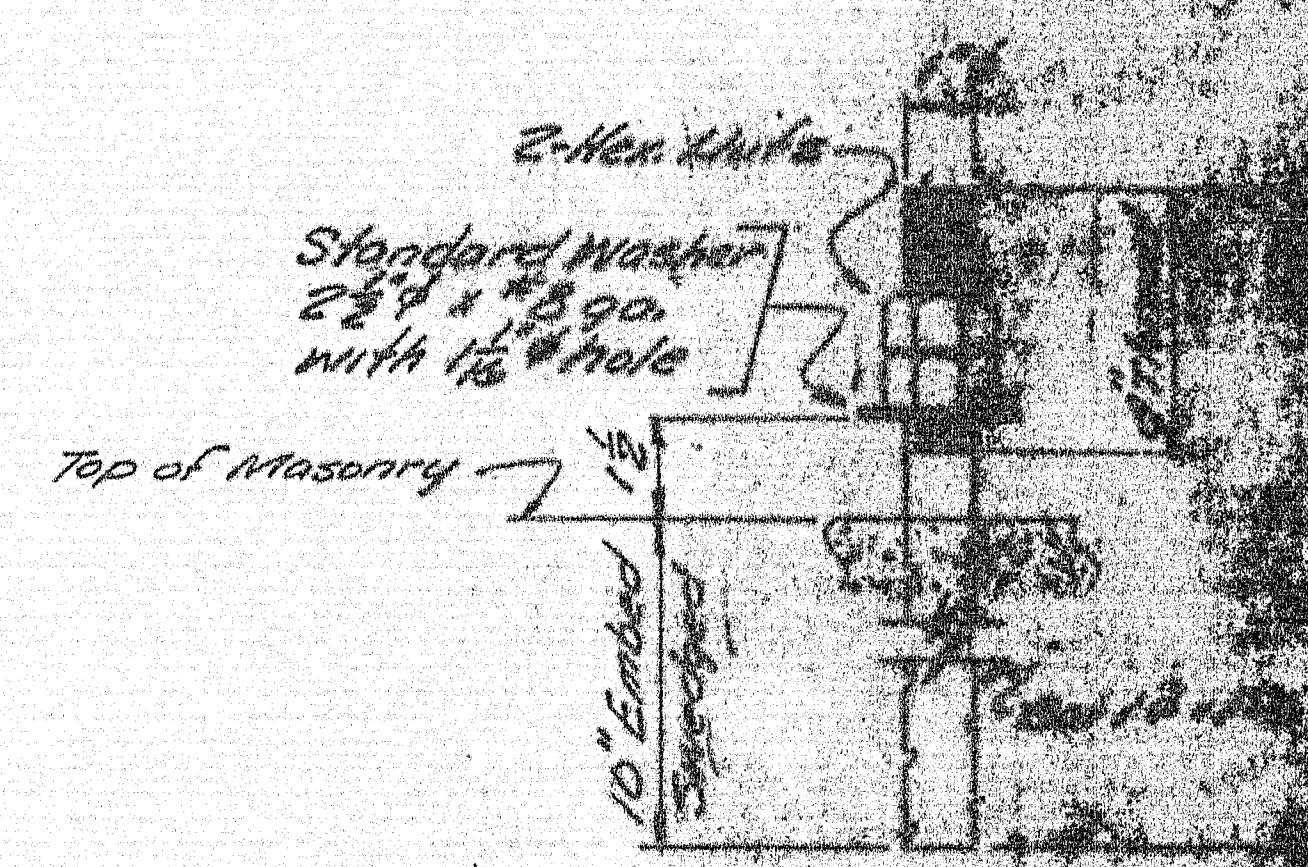
ELEVATIONS			
PRINT ISSUE		Bancroft & Martin Inc. Bellevue, Maine	
3	S.H.C.	5-29-67	BELVEDERE ROAD OVER I-95
3	CUST.	5-29-67	ISLAND FALLS, MAINE
4	SHOP	5-29-67	
3	F.A.	5-12-67	CUSTOMER NORMAN F. JACKSON INC.
	DRAWN	5-2-67 C.J.M.	DESIGNER M.S.H.C.
	REVISION		
	REVISION		
	REVISION		
ORDER VERBAL		DWG. B67-113-E2	

100-105



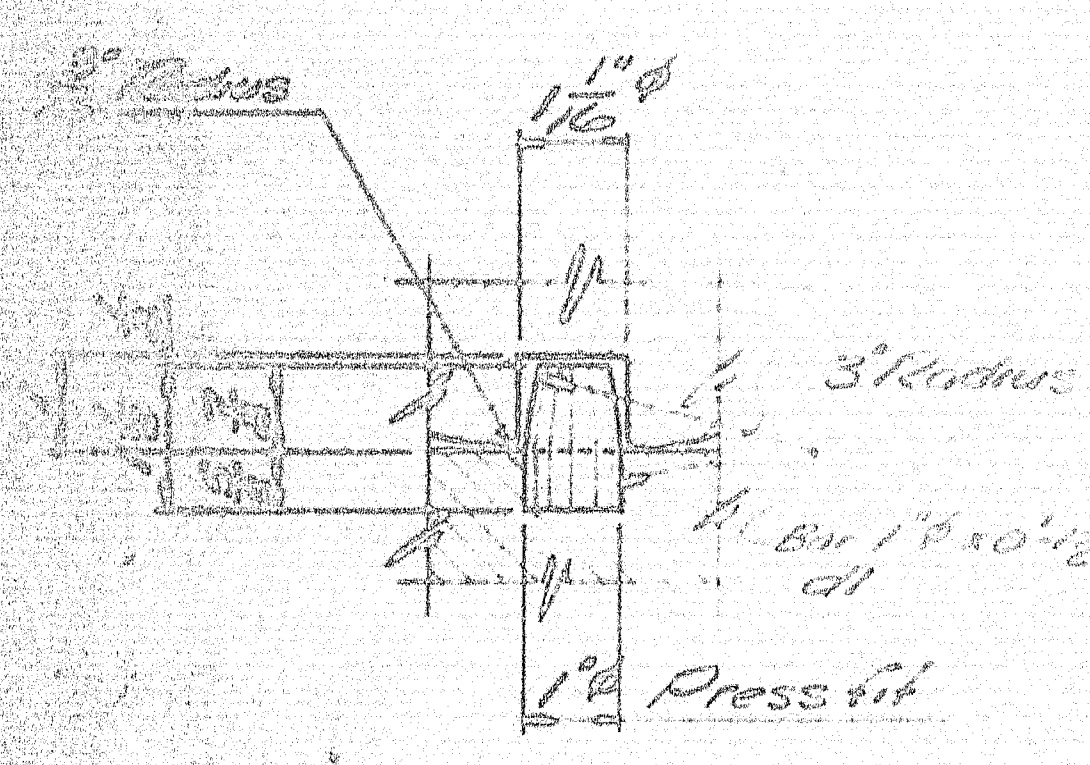


EXPANSION PEDESTAL EPC-2



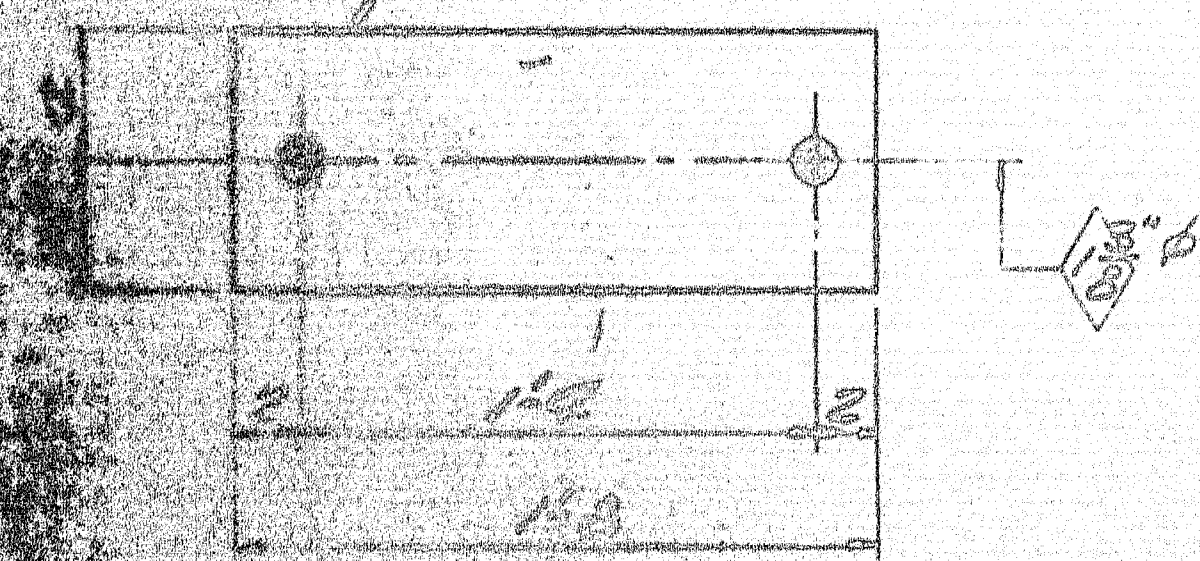
ANCHOR BOLT

16-REQD.



DOWEL DETAIL

Fabco Pad "SA27"
8-1/2 x 1-8



FABCO PAD

8-REQD.

PAINT NOTE:

- No paint on top of sole plate and 1 inch down from top on sides with balled inserted oil.
- No paint on surface with balled coat with mixture of paint and oil.
- No paint on anchor bolts.

SHIP		BILL OF MATERIAL			
MARK	NO.	MARK	SHAPE	LENGTH	WT.
EPC2	8		EXPANSION PEDESTAL		
	8	mp	Bar 8x1/2	1 8	
	8	mp	Bar 2x2	1 0	
	8	mp	Bar 7/8 x 2	0 11	
	8	sp	Bar 6x2	0 8	
	32	fb	Bar 2x1	0 5 1/2	
	16	dl	Bar 1x0	0 1 1/2	
	16	kp	Bar 1x0	0 8	
AB1	16		Bar 1x0	1 3	Swagged
	32	shop	1 inch Washers		
Field	16		1 inch Washers		Std Washers 2 1/2 x 3/4 with 1/8 hole
EPS	8		Pad 8-1/2 x 1-8	1 8	Fabco Pad "SA27" Req. No.

Allowance to be made for Machine when cutting above plates.

1-REQD.
PROJECT NO. 5-95-9 (42) 270
Sole plates "SA" to be field welded to stringers.

General material to be ASTM A36, A36, or A307.
All welds to be made with E70 Electrode.

SHOP CONNECTIONS: Welded
FIELD CONNECTIONS:
NOTES: As noted
PAINT: Red lead per Marine Spec. and as noted.

APR 2 1967

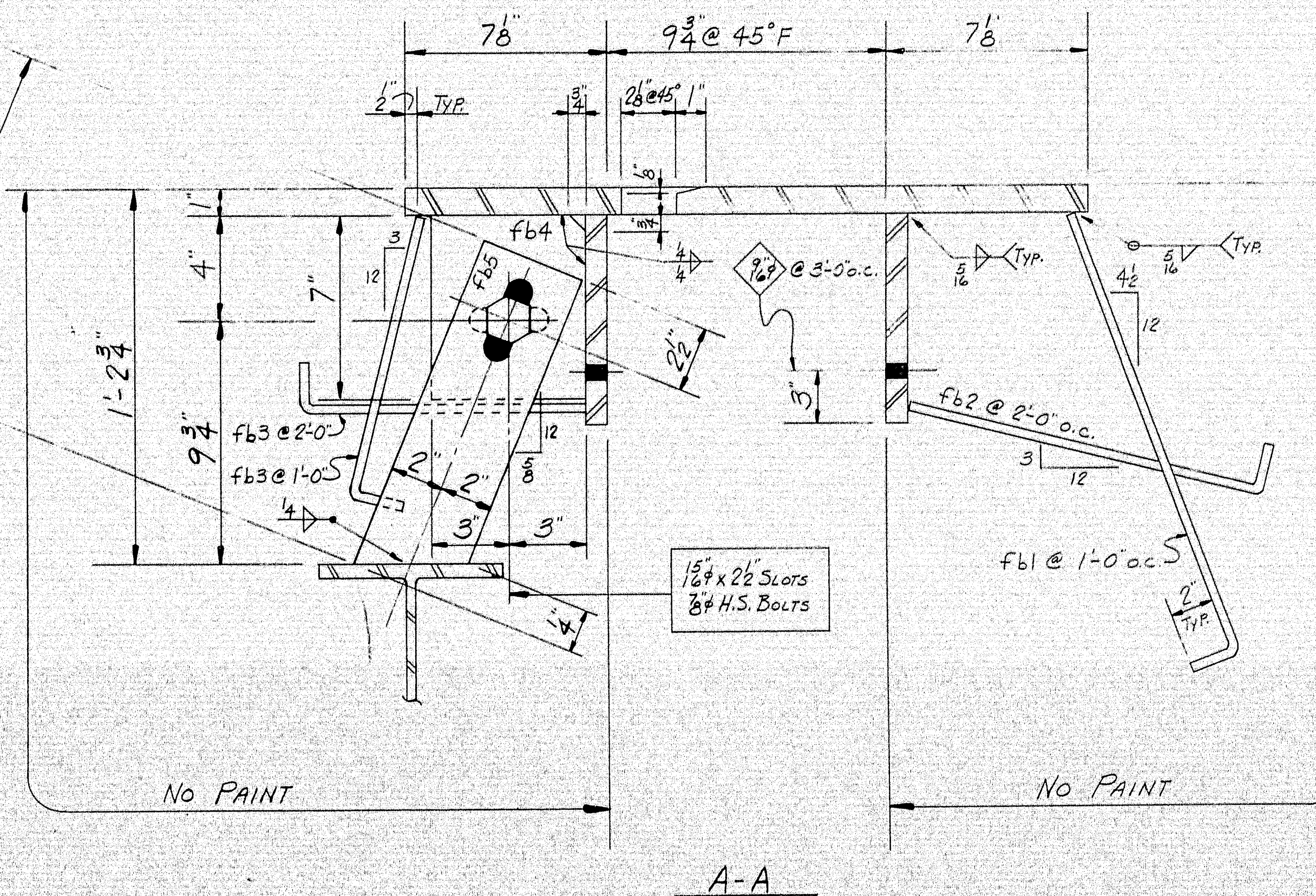
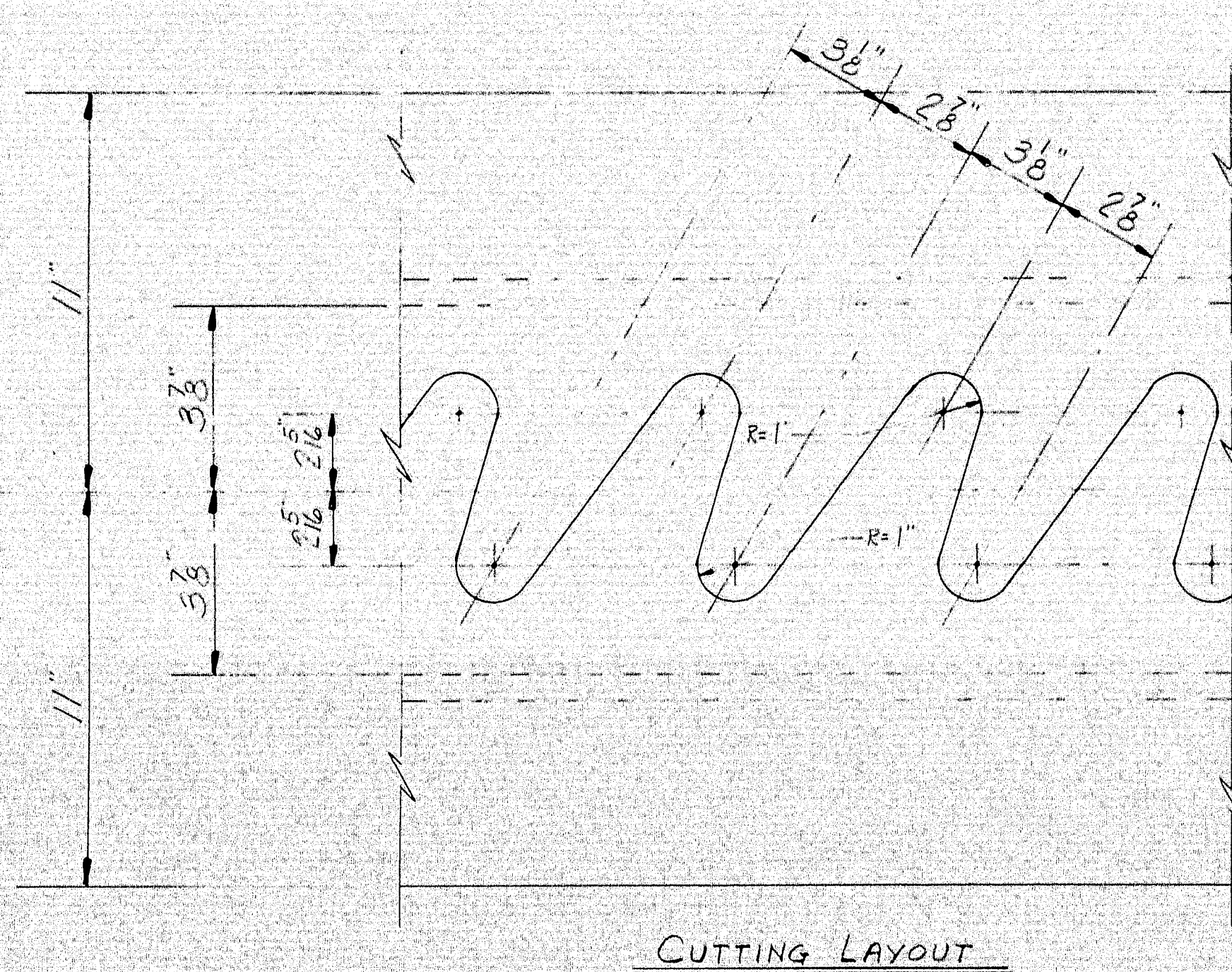
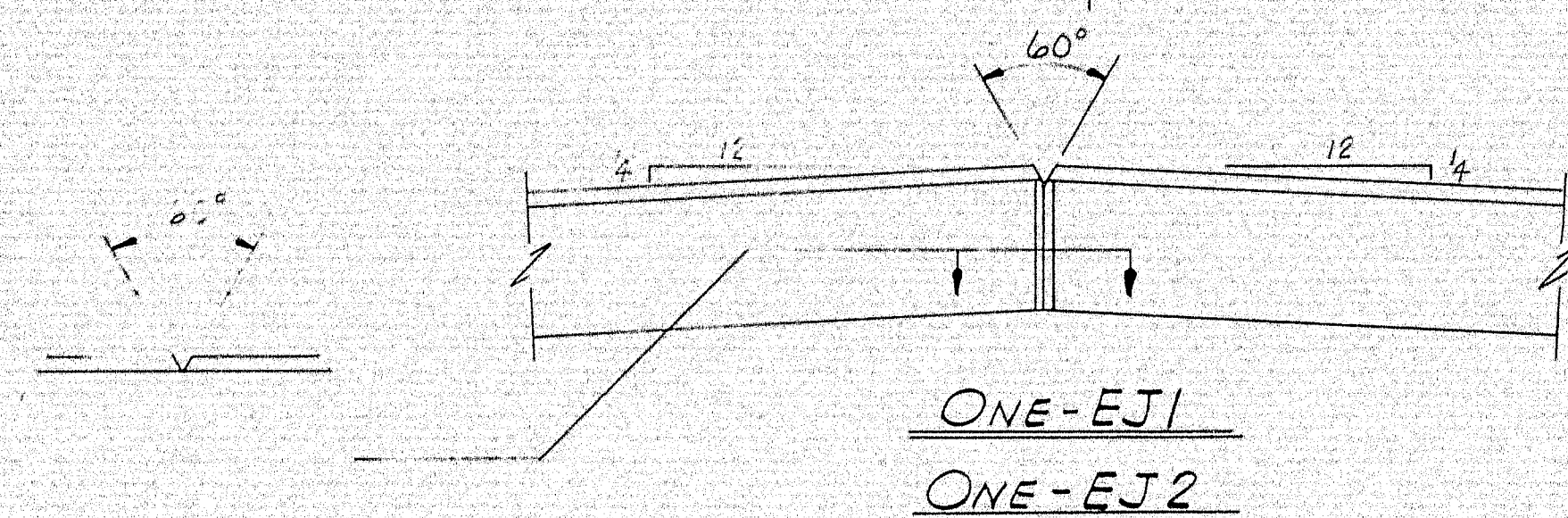
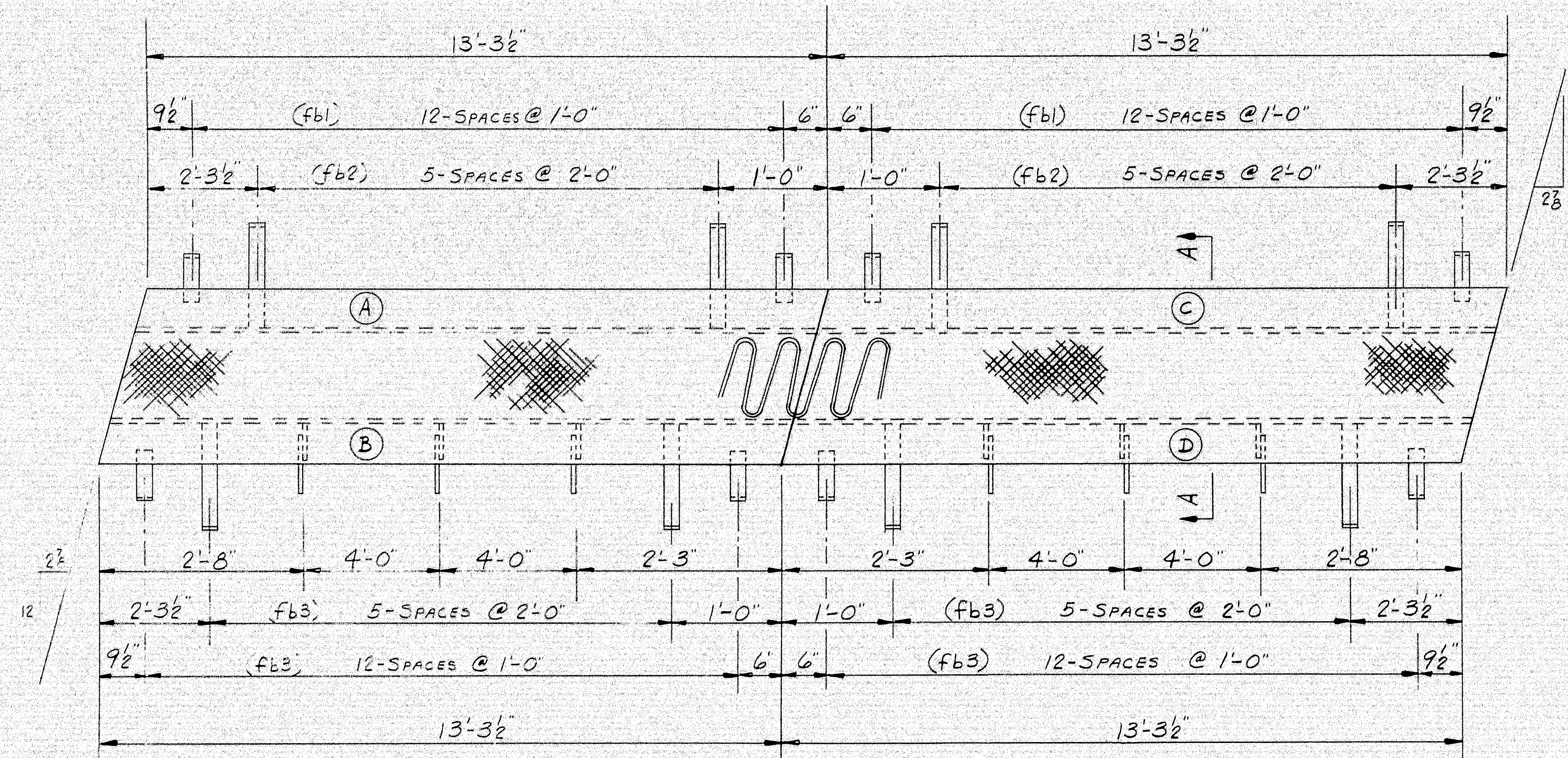
BEARING PEDESTAL

Thompson & Martin Co.
1000 North 1st St.
BELLEVILLE, MO 63701
ISLAND FALLS, MAINE

CUSTOMER: MAINE
REGION: MAINE

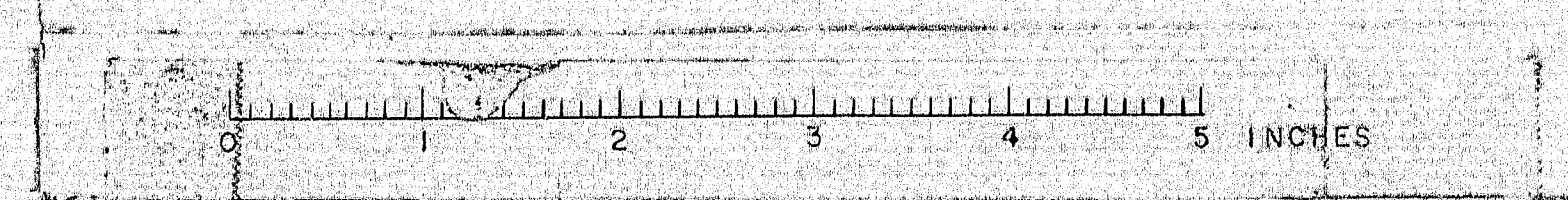
ORDER NO. 100-108

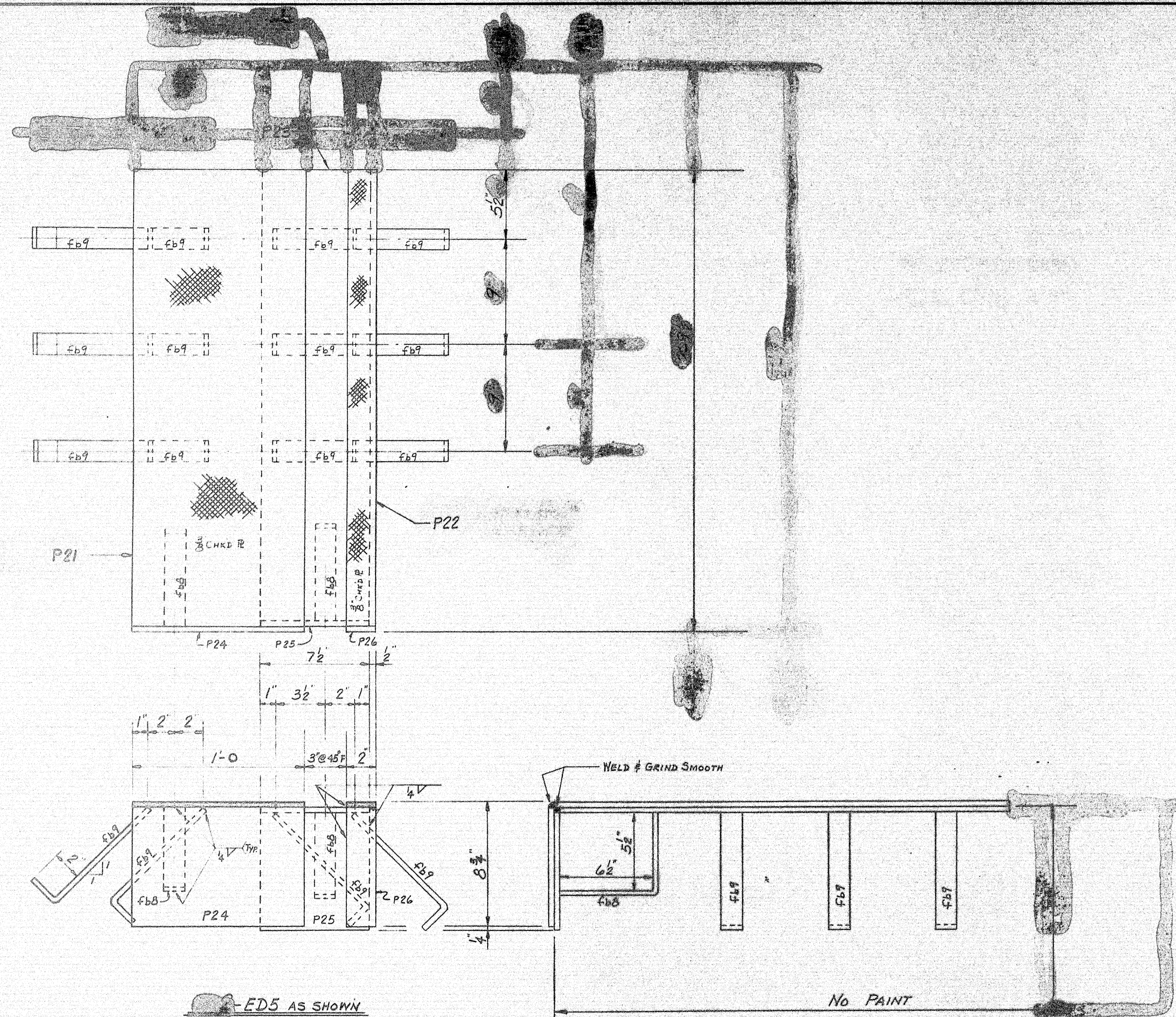
100-108



SHIP		BILL OF MATERIAL		JOB NO.	B67-118	DWG. NO.	54
MARK	NO.	MARK	SHAPE	LENGTH	WT.	REMARKS	
EJ1A	1		EXPAN.DAM				
EJ1B	1						
EJ1C	1						
EJ1D	1						
EJ2A	1						
EJ2B	1						
EJ2C	1						
EJ2D	1		do				
	4		P 22x1	13 8 ³ / ₄		CHK'D. P A36	
	8		P 8 x ³ / ₄	13 8 ³ / ₄		A36	
	52	fb1	FB. 2 x ³ / ₈	1 8		BENT	
	24	fb2	do	1 4		do	
	76	fb3	do	1 1		do	
	12	fb4	FB. 6 x ³ / ₈	0 7			
	12	fb5	FB. 4 x ³ / ₈	1 0 ³ / ₈		do	
	12	SHOP	3 ³ / ₄ H.S. BOLT	0 24		A325	
	12	SHOP	3 ³ / ₄ H.S. WASHERS				

100-109





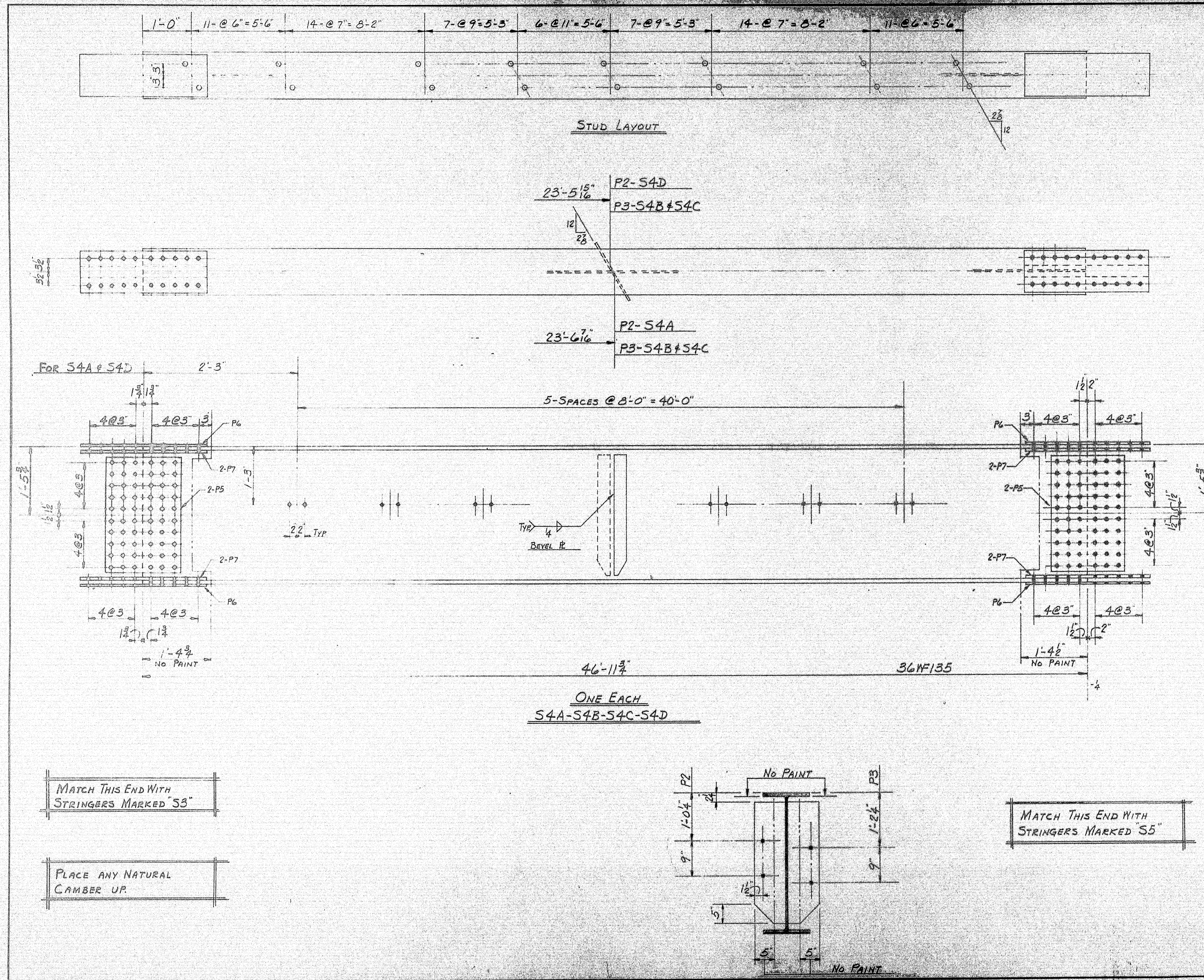
ED5 AS SHOWN
ED6 OPP. HAND

[illegible]

SHOP CONNECTIONS: *WELD E70 LOW-HYDROGEN*
FIELD CONNECTIONS:
HOLES:
PAINT: *STATE OF MAINE SPEC'S.*

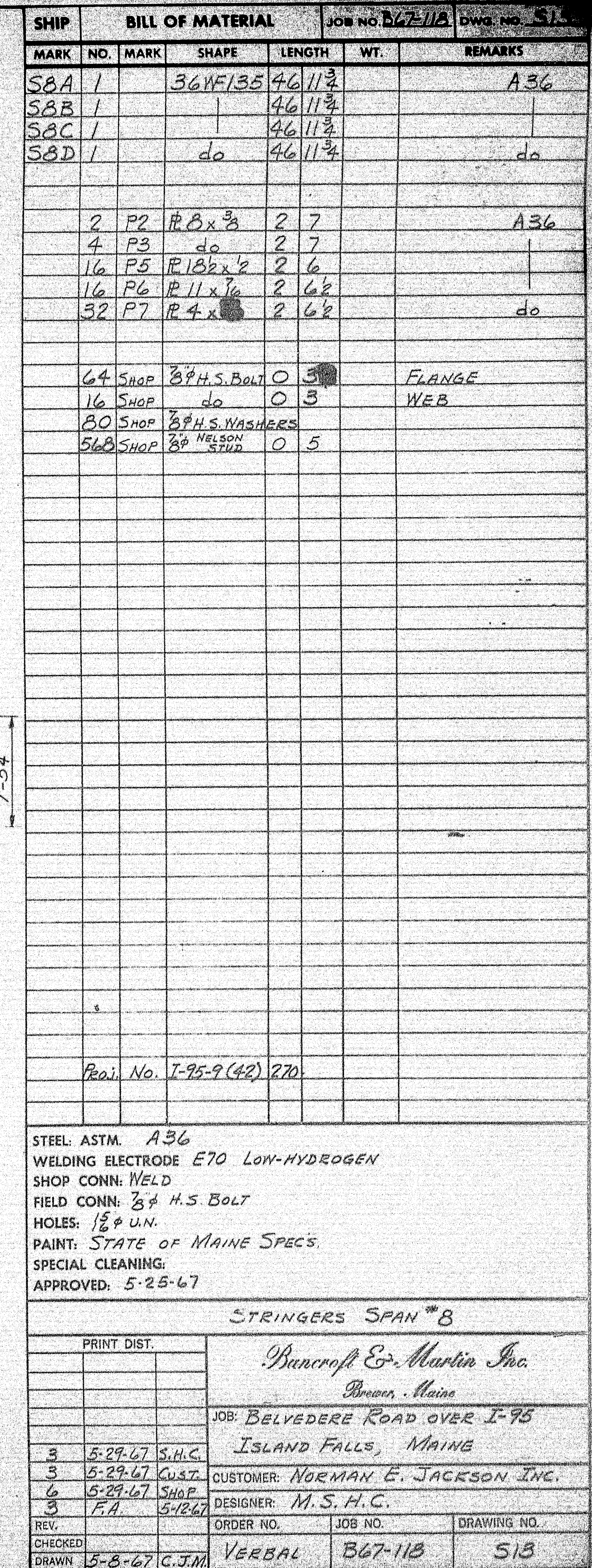
APP'D <i>ACN</i> 5-25-67			
SIDEWALK EXPANSION DAMS			
PRINT ISSUE		<i>Bancroft & Martin Inc.</i> <i>Brewer, Maine</i>	
3	SHC	5-29-67	POLYMER LEAD FILL, MAINE
3	CUST	5-29-67	
5	SH&P	5-29-67	
3	FA	5-29-67	
DRAWN		5-4-67 GJM	CUSTOMER <i>NORMAN JACKSON INC.</i>
REVISION			DESIGNER <i>M. S. H. C.</i>
REVISION			ORDER <i>VERBAL</i> DWG
REVISION			

100-110

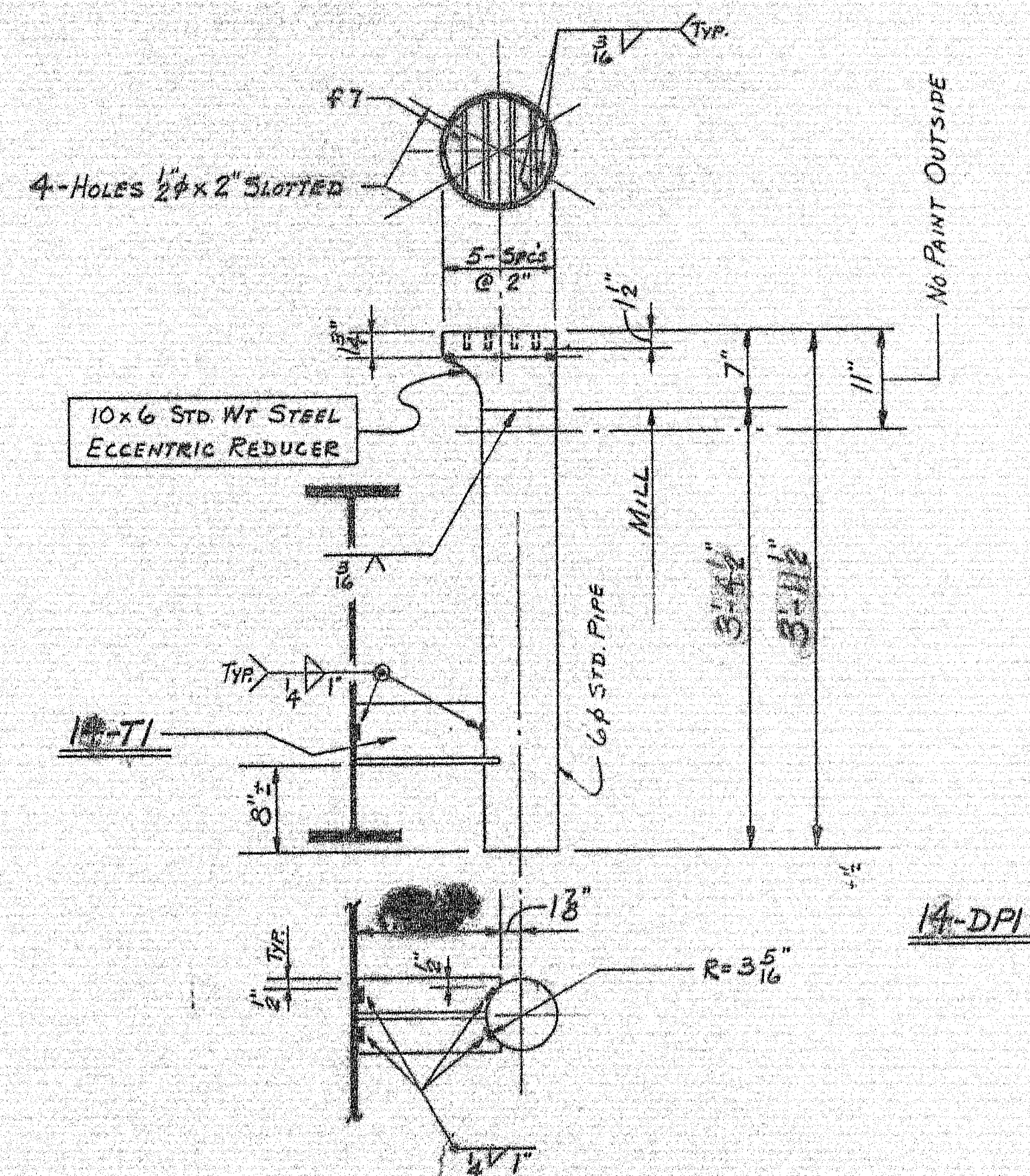
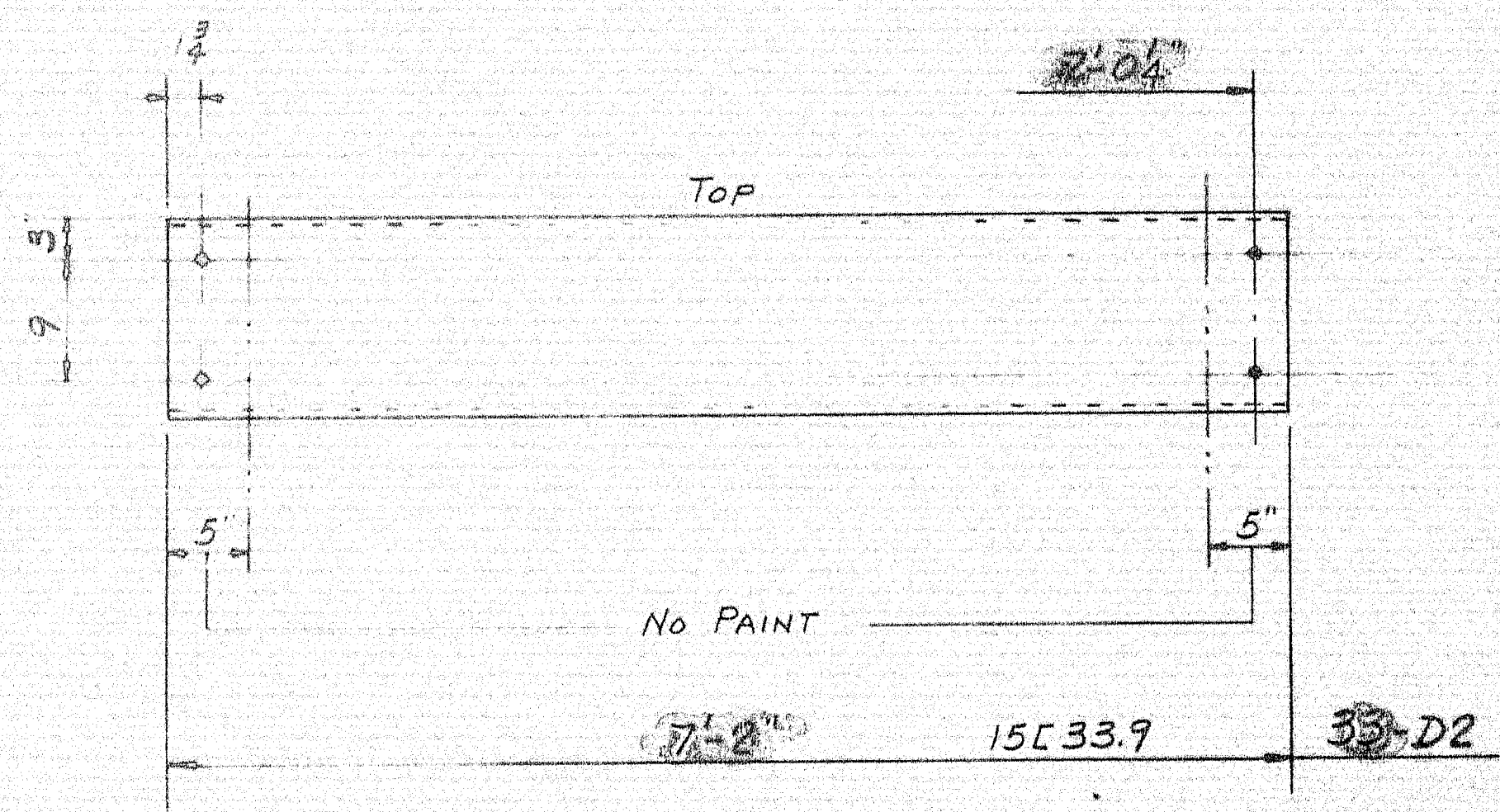
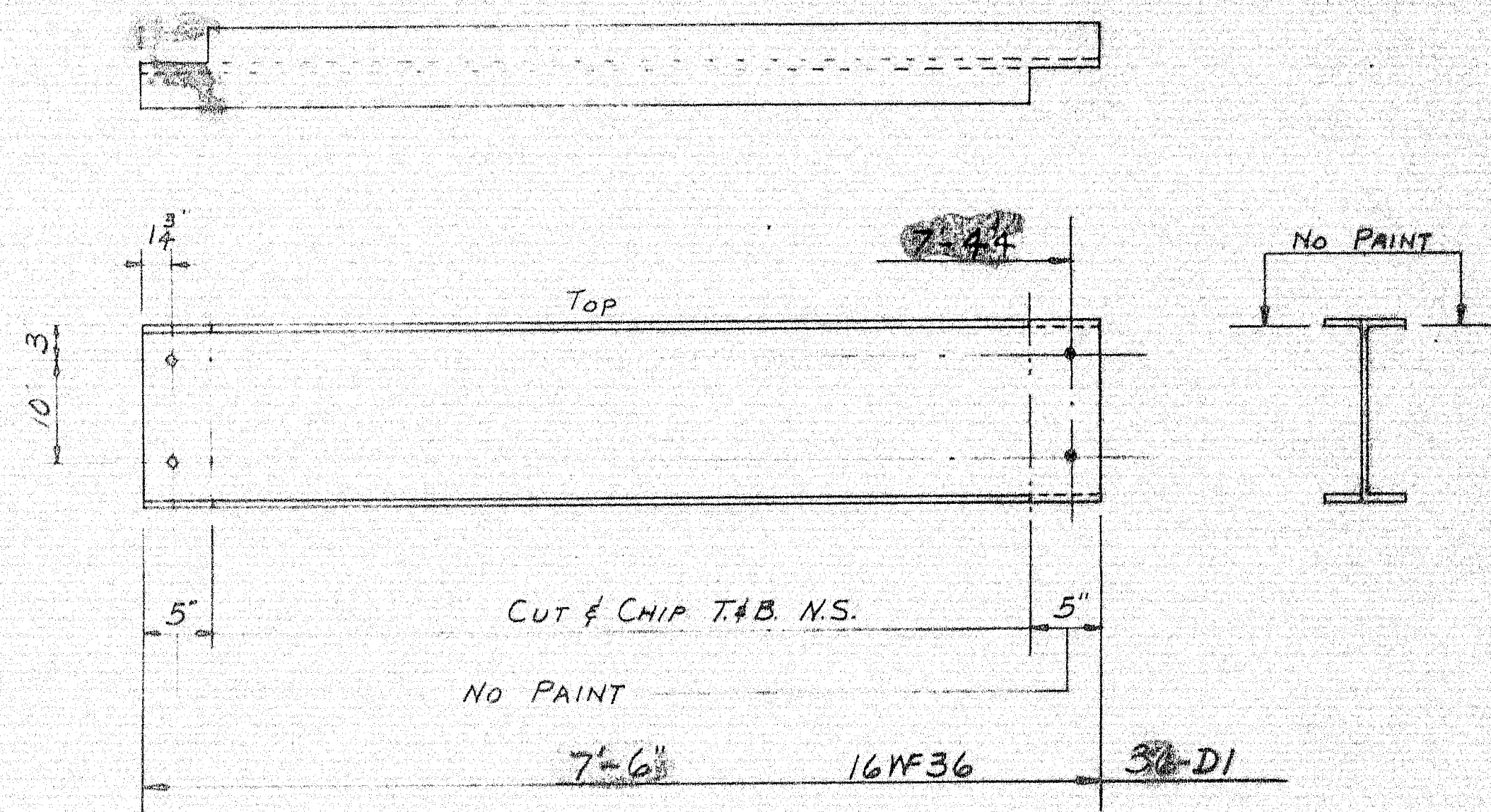


SHIP		BILL OF MATERIAL			JOB NO. B67-114		DATE	
MARK	NO.	MARK	SHAPE	LENGTH	WT.	REMARKS		
S4A	1		36WF135	46' 11 3/4"		A36		
S4B	1			46' 11 3/4"				
S4C	1			46' 11 3/4"				
S4D	1		do	46' 11 3/4"		do		
			</					

100-114



100-119



SHIP		BILL OF MATERIAL				DWG.
MARK	NO.	MARK	SHAPE	LENGTH	WT.	REMARKS
D1	36		16WF36	7' 6"		A36
D2	33		15C33.9	7' 2"		A36
DPI	14		6" STD. PIPE	3' 4 1/2"		MIE
	14		10x6 STD. WT. ECCENTRIC REDUCER			
	56	F7	FB 12x2	0' 10"		CUT TO FIT
T1	14		STG WF 135	0' 5 1/2"		A36

APP. AS NOTED 5-25-67

SHOP CONNECTIONS: WELD (E-70 LOW-HYDROGEN)
 FIELD CONNECTIONS: WELD & BOLT
 HOLES 15 Ø
 PAINT: STATE OF MAINE SPEC'S.

PROJ. No. J-95-9 (42) 270

DIAPHRAGMS & DRAINS			
PRINT ISSUE		Prancroft & Martin Inc. Brunswick, Maine	
3	S.H.C.	5-29-67	BEVERLY ROAD OVER I-95
3	CUST.	5-29-67	ISLAND FALLS, MAINE
6	SHOP	5-29-67	
3	F.A.I.	5-12-67	CUSTOMER NORMAN E. JACKSON
DRAWN	5-12-67	C.J.M.	DESIGNER M. S. H.C.
REVISION			
REVISION			
ORDER	VERBAL	DWG	BLZ-UB-315

100-120

